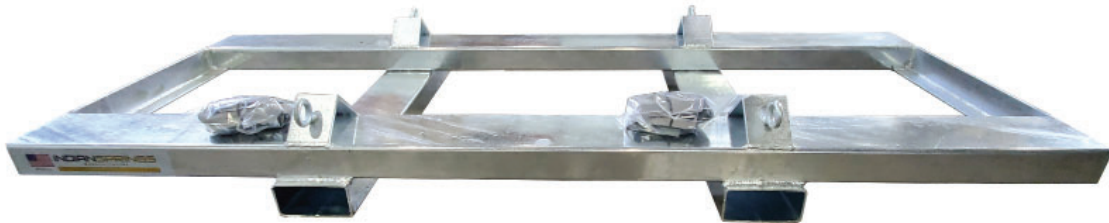


TON CONTAINER SKID

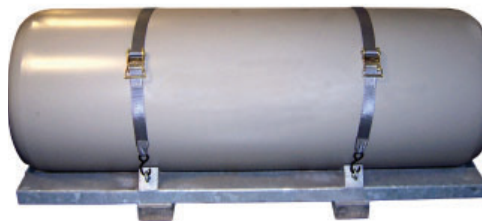
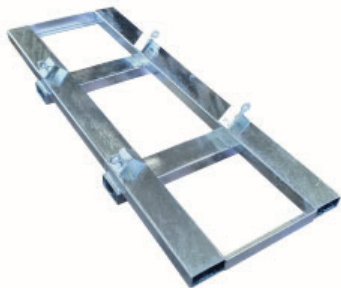
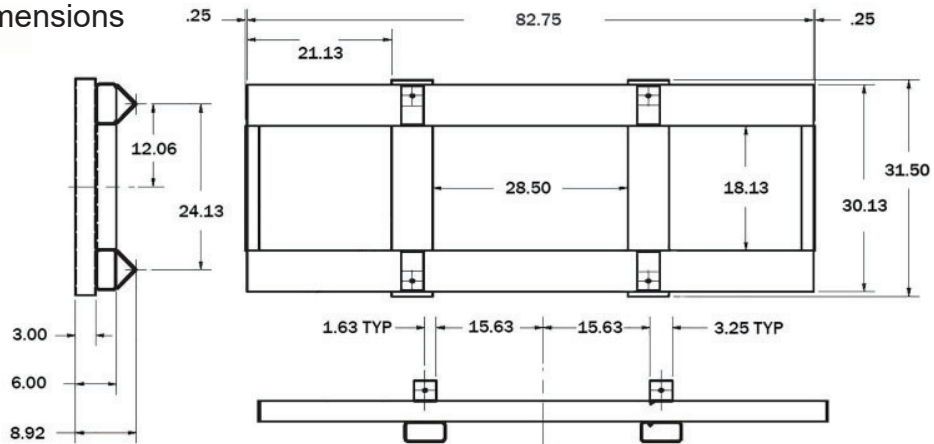
The chlorine ton container skid is designed to safely handle one ton containers: DOT 106A500.

PART# SKID106



- Strong, all steel, welded construction with galvanized finish.
- Designed to fit US DOT 106A500 Ton Containers
- Includes two (2 pcs) ratchet tie-down straps.
- Fits standard industrial forklift (confirm dimensions below).

Critical Dimensions



Size: 31-1/2" x 83-1/2" x 8", 300 lbs.

INDIAN SPRINGS

Indian Springs Manufacturing Co., Inc. PO Box 469 Baldwinsville NY 13027-0469. (315)635-6101
www.indiansprings.com