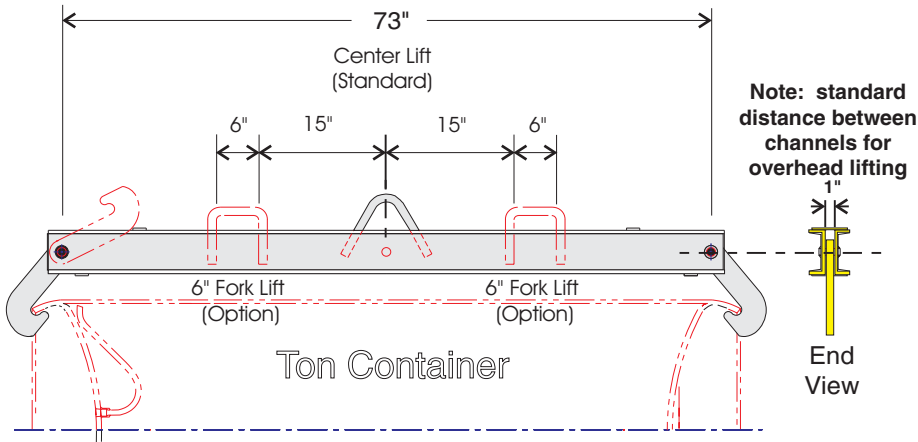


TON LIFTING BEAM



FEATURES

- Manufactured to ASME B30.20 specifications
 - Strong, all steel, welded construction with 1" thick steel hooks
 - Bright yellow enamel paint finish
 - Center lift is standard
 - Low clearance model and fork lifts* available as options
 - Total weight approx. 110 lbs., 4000 lbs. lifting capacity
- *Note: Please confirm fit of listed dimensions with your fork lift; otherwise, specify dimensions for separate quotation.*



Freight not included